

Vertical Blinds with Zirlon® Wheeled Head Rail System Model # LVERT

Versatile, high quality solution for large windows, sliding doors and commercial applications

Part I - General

1.01 Scope

A. Furnish and install vertical blinds, provided by LEVOLOR Commercial, 1400 Lavon Dr., McKinney, TX 75069, in accordance with specifications, drawings, and contract documents.

B. Related work specified elsewhere.

1.02 Quality Assurance

A. Installer's qualifications:

1. The installer shall be a firm approved by LEVOLOR Commercial.

2. The installer shall be qualified to install the product specified, as demonstrated by prior experience. Incorrect installation may void warranty.

B. Job mock-up (Describe)

1.03 Submittals

A. Product information: Submit Levolor's product literature and installation instructions.

B. Shop drawings: Indicate field-measured dimensions of opening which are to receive blinds, details on mounting surface and sill conditions, and details of corners and conditions between adjacent blinds.

C. Color samples: Submit a sample of each type and color of material specified.

1.04 Delivery, Storage, and Handling

A. Packing and Shipping

1. Materials shall be delivered to the project in Levolor's original unopened packaging with label's intact.

2. Materials shall be stacked horizontally using plastic or wood shims such that drainage and ventilation are provided for and such that water cannot accumulate in, about or upon the containers.

3. Materials shall be delivered to the project in Levolor's original unopened packaging with label's intact.

B. Storage

1. Materials shall be stored in a clean area which is free of corrosive fumes, dust, and away from construction activities.

1.05 Project/Site Conditions (Before Product Installation Begins)

A. Roof must be tight, windows and frames installed and glazed, and interior doors hung.

B. Wet work including concrete, masonry, plaster, stucco, terrazzo, sheet-rock, spackling, and taping (including sanding) shall be complete and dry.

C. Ceilings, window pockets, electrical, and mechanical work above the product shall be complete.

D. Electrical power (110 volt AC) shall be available for installer's tools within 500 ft. of product installation areas.

1.06 Warranty

A. Limited Lifetime Warranty: LEVOLOR Commercial shall repair or replace for the life of the blind, at its option, without charge, any part found defective in workmanship or material as long as the blind remains in the same window for which it was purchased.

Part II - Products

2.01 Manufacturer and Product Description

A. Vertical Blind Zirlon® Headrail System manufactured by Levolor (model # LVERT).

B. Materials:

1. Headrail shall be of extruded silver painted aluminum alloy, 1 5/16 inch wide x 1 7/16 inch high with capped ends, provided by Delrin, or equal, sprocket wheels. End caps shall be equipped with covers to enclose sprockets and rotation rod ends and rollers for traverse rods.

2. Carriers shall be made of Delrin, 3/8 inch wide and traverse on Zirlon wheels to reduce draw force. No glides or sliders shall be allowed. The vane stem shall be of snap-out design to yield when subjected to interference without damage to the blade or any part of the carriage assembly.

3. Plastic (Delrin) spacer links shall space and stabilize carriers by passing smoothly between stabilizer guides on each carrier.

4. Vanes shall rotate 180 degrees and pack, when traversed, into no more than per 3/8 inch vane. When rotated, 3 1/2 inch vanes shall overlap not less than 3/8 inches.

5. Rotation mechanism shall allow vanes to be rotated by means of:

I. Cordless wand standard. 3/8 inch diameter wand is available.

a. Traditional wand finish options:

1. White 67171
2. Off White 67172
3. Satin Nickel 67174
4. Bronze 67176

II. Cord/Chain. Either actuation method shall provide 180 degree rotation by turning a keyed aluminum rod actuating Delrin worm and spur gear in each carrier. Gears shall provide no less than 8-to-1 mechanical advantage and keep vanes fixed until reset by control. Spur and worm gear shall slip under extreme loading and be able to be realigned.

6. Traversing mechanism shall allow vertical blinds to traverse left to right, right to left, split or center. Blinds shall traverse by means of a fiberglass wand cordless with zinc handle. Vanes rotate and traverse with same wand. With the Cord/Chain option, vertical blinds shall traverse left to right, right to left, split, or center by means of a non-stretch traverse cord.

7. End caps: Control and return end cap assemblies shall be molded to match aluminum extrusion profile and provide contemporary aesthetic appearance.

8. Installation brackets shall be provided for overhead or surface installation using brackets and angle brackets. Brackets shall be designed to facilitate installation and removal of track.

9. Vane spacing: A plastic (Delrin) spacer link integral with the carrier body shall be used to provide visually uniform vane spacing when the blind is fully drawn. Normal vane spacing on center is a fraction of an inch less than the vane size. For example:

Vane width: 3 1/2 inches Spacing on center 3 1/8 inches.

10. Vanes shall be extruded of 100% GEON solid vinyl or equal. The vinyl shall also contain ultra violet inhibitors. Calcium carbonate content will not exceed 15% on standard colors. Vanes shall withstand 140 ° heat chamber for thirty minutes without distortion, and no more shrink and stretch than 1/2 of 1%. A ten-foot vane suspends from the center of one end shall hang straight with no twist, warp or bow.

Vaness shall be selected from the following styles:

- Solid curved
- Perforated

11. Options available are:

- a. Cordless Wand Control (Standard)
- b. Cord/Chain Control
- c. Backstacker™ (for Cord/Chain Control Only)
- d. One Way Right Stack
- e. One Way Left Stack
- f. Dual Stack
- g. Center Stack
- h. Reverse Stack (for Cord/Chain control only)
- i. DesignLine™ Valance (Standard)

Part III - Execution

3.01 Inspection

A. Window treatment subcontractor shall be responsible for inspection of site, field measurements, and approval of mounting surfaces and installation conditions.

B. Subcontractor shall verify that site is free of conditions that interfere with blind installation and operation, and shall begin installation only when any unsatisfactory conditions have been rectified.

3.02 Installation

A. Installation shall comply with Levolor specifications, standards, and procedures.

B. Provide support brackets as per Levolor's installation instructions.

C. See installation instructions packaged with blinds for more installation details.

D. Provide adequate clearance to permit unencumbered operation of blind and hardware.

E. Demonstrate blinds to be in uniform and smooth working order.

3.02 Cleaning

A. Clean soiled PVC vanes by wiping clean with only a mild liquid detergent soap solution and water. Do not use abrasive cleansers. Ensure proper drying following cleaning by providing adequate ventilation.

LEVOLOR

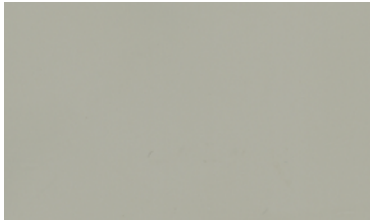
1400 Lavon Dr., McKinney, TX 75069 USA
Phone: 1.800.826.8021 · LEVOLOR.com/commercial

©2018 LEVOLOR®. All rights reserved. US and non-US patents and patents pending.
Product specifications are subject to change without notice. Printed in USA.

Color Palette

PVC Vanes - NFPA 701 Certificate Available

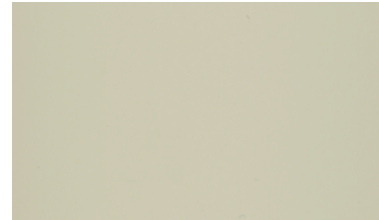
Horizon



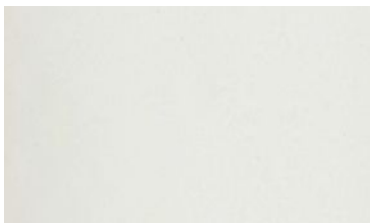
23089174 SQUIRREL GRAY



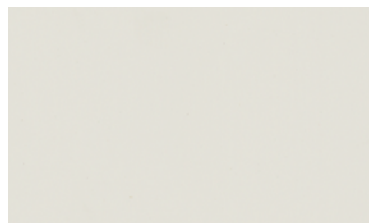
23089170 BRUSHED ALUMINUM



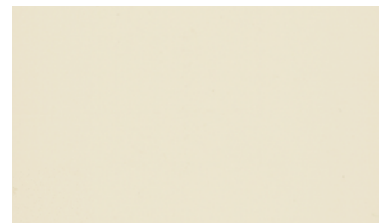
23089172 ALABASTER



23089171 COTTON



23089181 SNOW WHITE



23082010 DOVER



23089177 TAN

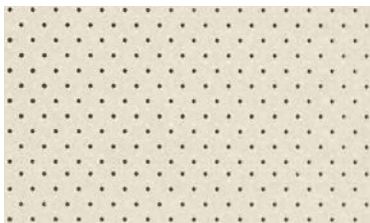


23089183 DESERT SAND



23089173 MUSHROOM

Perforated



P32 23881713 OYSTER BEIGE



P32 23889095 SIERRA SNOW



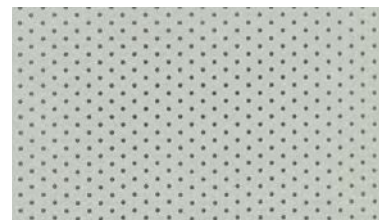
P32 23881717 COOL GRAY



P21 23881793 OYSTER BEIGE



P21 23882270 SIERRA SNOW



P21 23880711 COOL GRAY

P32 - 6% Openness

P21 - 12% Openness

LEVOLOR

1400 Lavon Dr., McKinney, TX 75069 USA
Phone: 1.800.826.8021 · LEVOLOR.com/commercial

©2018 LEVOLOR®. All rights reserved. US and non-US patents and patents pending.
Product specifications are subject to change without notice. Printed in USA.