

### Riviera A-Frame 1 Inch Blind Model #RIV1-S

Top quality 1 inch horizontal aluminum window covering for all angular window applications.



#### Key Features

Fully operational fanned slats

Positive slat attachment

No stair-step effect

Guardian Tilter disengaging clutch mechanism

Standard Riviera 1 Inch headrail, slats, and components

#### Product Overview

The Riviera A-Frame 1 Inch Blind represents one of Levolor's most popular top quality specialty horizontal blinds backed by the Limited Lifetime Warranty. The A-Frame is custom built as a complete unit for increased durability and easier on-site installation.

To eliminate light leakage and the stair-step effect, a slat is attached parallel to the headrail. All fanned slats on the Levolor A-Frame blind are positively attached to the lift cords insuring smoother operation, greater reliability, and tighter closure as well as a cleaner, more aesthetic appearance. This feature also enables full, unhindered rotation of all slats, including the top fanned slats and the parallel slat connected to the headrail.

The A-Frame blind also includes the exclusive Guardian Tilter disengaging clutch mechanism which eliminates over rotation of the tilt wand and protects the tilt mechanism against breakage. This key feature eliminates the problem of the slats being locked in a permanent position preventing further opening or closing of the blind.

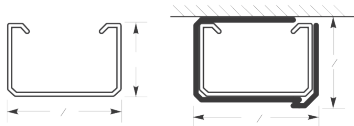
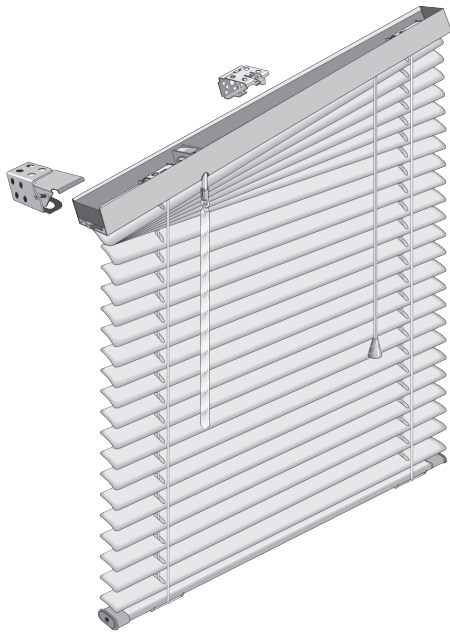
The A-Frame blind utilizes Riviera 1 Inch components – from the durable, sleek headrail and bottomrail to the high quality slats. This blind is built for maximum performance with Levolor committed to helping solve any design requirement. The A-Frame is offered in a large selection of popular colors. The SheerView perforation option provides a unique see-through feature, reducing solar heat gain up to 42% as compared to a fully opened blind while optimizing the exterior view and maximizing light/glare control.

## Product Specifications

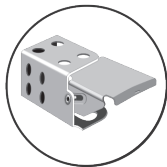
For more detailed specifications please reference Riviera A-Frame 1 Inch Blind product Guide Specifications.

### Products

- A. Riviera A-Frame 1 Inch Blind manufactured by LEVOLOR
- B. Lifetime Limited Warranty
- C. Materials:



SheerView



Open End Bracket



Fanned Slats with Trim Detail



Hold-down Bracket

- Headrail** shall be of .025 inch thick painted steel, "U" shaped, 1 inch high x  $1\frac{9}{16}$  inches wide. All hardware shall be enclosed in the steel headrail.
- Guardian Tilter** shall be of a .042 inch thick Tomized steel housing with a self-lubricating nylon, automatically disengaging mechanism to eliminate overdrive.
- Installation Brackets** shall be of at least .048 inches thick painted steel with a rivet-hinged safety locking front cover to permit removal of headrail without lateral movement.
- Ladders** (slat supports): Distance between slats shall not exceed 21.5mm.
- Slats** shall be of 5000 series magnesium aluminum alloy only. Slats shall be nominally 1 inch wide and the thickness of the slats shall be nominally .008 inches. All fanned slats are positively attached to the blind lift cord. Slats shall be (select one):
  - a. Unperforated
  - b. SheerView – Slats shall be perforated with a staggered pattern of .020 inch diameter holes, nominally 177 per inch of slat length. Slats shall have an openness factor of 6%.
- Slat Fanning** Slats may be fanned at blind peak based on headrail slope. Fanned slats shall completely overlap and cover all available space during closure preventing light leakage. Fanned slats shall be completely operational and rotate in conjunction with other slats.
- Operation** Blind shall have full tilt capability and lift to bottom of headrail.
- Options** shall include:
  - a. Extension Brackets
  - b. Hold-down Brackets
  - c. Multi-Colored Striping
  - d. Ring Pull
  - e. Telescopic or Non-telescopic Tilter Pole
  - f. Top Lok Cord Lock
  - g. Universal Ring Tilter
  - h. 2 Slat Framed Vogue Valance

**LEVOLOR**

1400 Lavon Dr., McKinney, TX 75069 USA  
Phone: 1.800.826.8021 • LEVOLOR.com/commercial  
©2018 LEVOLOR®, All rights reserved. US and non-US patents and patents pending.  
Product specifications are subject to change without notice. Printed in USA.