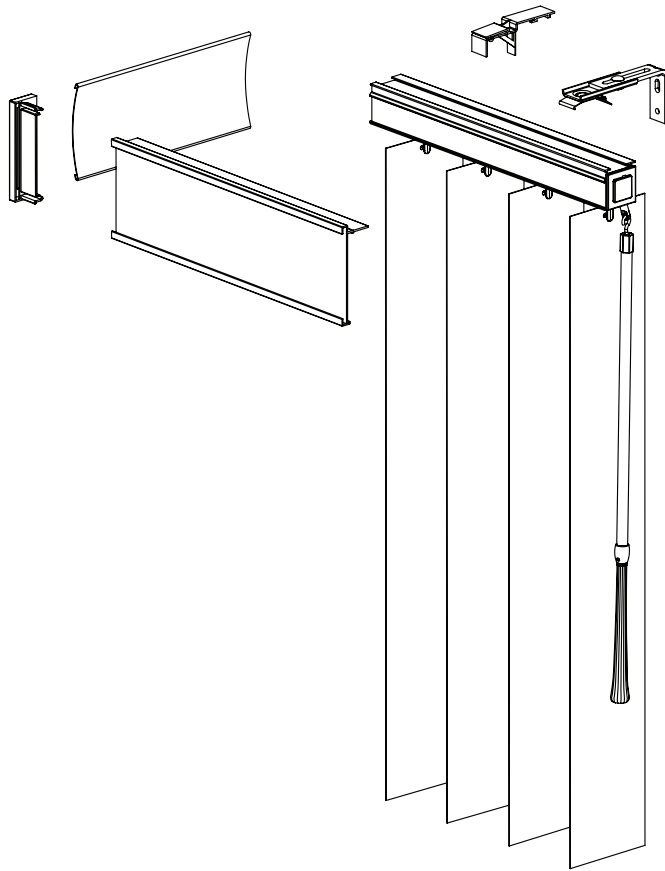


### Vertical Blinds with Zirlon® Wheeled Headrail System Model # LVERT

Versatile, high quality solution for large windows, sliding doors and commercial applications.



#### Key Features

Self-lubricating wheeled system glides smoothly

NFPA 701 available on PVC Vanes

Available in 15 updated vane finishes

Cordless wand control standard, Cord/chain option available free of charge

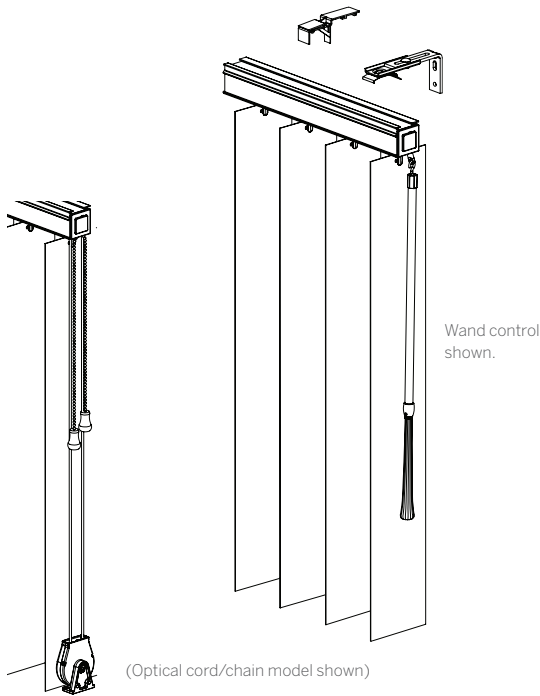
Lifetime Limited Warranty

#### Product Overview

Exclusive to LEVOLOR Vertical Blinds, the Zirlon® Wheeled System is designed for durability and superior performance; perfect for applications in hospitals, hotels, schools, etc.

Carriers are specially designed at  $\frac{3}{8}$  inches, versus standard  $\frac{7}{16}$  inches. While this not only creates a better aesthetic, it also allows for a smaller wall pocket needed to contain the drawn blinds. Choose from four easy-to-use draw types: Right Stack, Left Stack, Dual Stack and Center Stack.

Now standard with cordless wand control to eliminate dangling cords/chains, providing a clean look and smooth operation. Choose from high-quality fiberglass and zinc wands in four finish options and two profiles that coordinate with valances.



## Product Specifications

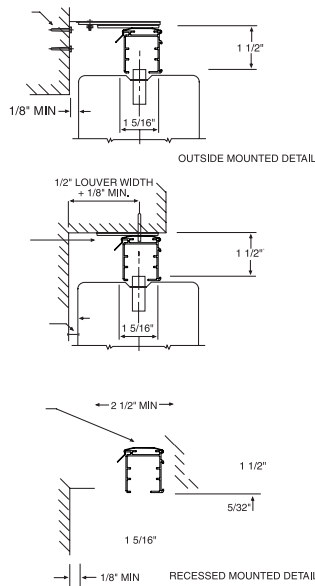
For more detailed specifications, please reference the Vertical Blinds with Zirlon Wheeled Headrail System product Guide Specifications.

### Products

- A. Zirlon Wheeled System Vertical Blinds manufactured by Levolor.
- B. Lifetime Limited Warranty
- C. Materials:

- Headrail** shall be silver painted aluminum. 1 5/16 inches wide 1 7/16 inches high.
- Carriers** shall be made of Delrin 3/8 inch wide and traverse on Zirlon wheels to reduce draw force. The vane stem shall be of snap-out design to yield when subjected to interference without damage to the blade or any part of the carriage assembly.
- Rotation Mechanism** shall allow vanes to be rotated by means of a fiberglass wand with zinc handle or a #6 nickel plated bead chain. Cordless wand standard.

### Custom Vertical Blind mounting detail



Note: Lift-out headrail shown in all diagrams

Traditional wand finish options:

1. White 67171
2. Off White 67172
3. Satin Nickel 67174
4. Bronze 67176

- Traversing Mechanism** shall allow vertical blinds to traverse left to right, right to left, split, or center. Blinds shall traverse by means of fiberglass cordless wand with zinc handle (standard control option). With the Cord/Chain option, vertical blinds shall traverse left to right, right to left, split or center by means of a non-stretch traverse cord.
- Installation Brackets** shall be provided for overhead or surface installation using brackets and angle brackets. Brackets shall be designed to facilitate installation and removal of track.

- Vanes** shall be (select one):

1. Solid curved
2. Perforated

- Options** shall include:

- |                                       |  |
|---------------------------------------|--|
| a. Cordless Wand Control (Standard)   | f. Dual Stack                                  |
| b. Cord/Chain Control                 | g. Center Stack                                |
| c. Backstacker™ (for Cord/Chain Only) | h. Reverse Stack (for Cord/Chain Control Only) |
| d. One Way Right Stack                | i. DesignLine™ Valance                         |
| e. One Way Left Stack                 |  |

# LEVOLOR

1400 Lavon Dr., McKinney, TX 75069 USA  
 Phone: 1.800.826.8021 · LEVOLOR.com/commercial  
 ©2018 LEVOLOR®. All rights reserved. US and non-US patents and patents pending.  
 Product specifications are subject to change without notice. Printed in USA.