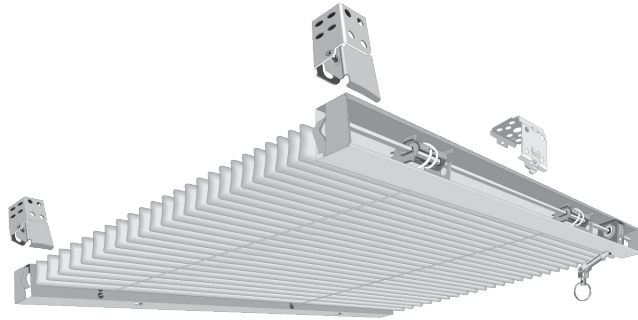


Riviera Skylight 1 Inch Blind Model #RIV1-S

Top quality 1 inch horizontal aluminum window covering for 45° angle plus window applications.



Key Features

Tilt capability

Easy-to-use universal tilter ring and telescopic tilter pole

Guardian Tilter disengaging clutch mechanism

Invisible guide wires

Concealed guide wire tension adjusters

Product Overview

The Riviera Skylight 1 Inch Blind represents one of Levolor's most popular top quality specialty horizontal blinds backed by a limited lifetime warranty. The Skylight blind can accommodate windows with a 45° angle from the vertical or greater all the way through the traditional horizontal skylight. The Skylight feature tilt capability with the Universal Tilter Ring making tilting the slats quite simple through the use of the telescopic tilter pole.

The Skylight blind further includes the exclusive Guardian Tilter disengaging clutch mechanism which eliminates over rotation of the tilt wand and protects the tilt mechanism against breakage.

The Skylight invisible guide wires travel with the ladders, which along with the 21.5mm ladder spacing, ensure tight closure, superior light control, and eliminate the need for additional holes. The guide wire also comes pre-installed making blind installation quick, easy and cost effective. The unique adjusters, concealed within the headrail, enable the wires to be easily lengthened or shortened in the field with a turn of a supplied 1/8 inch Allen wrench.

The Skylight blind utilizes standard Riviera 1 Inch components – from the durable, sleek headrail and bottomrail to the high quality slats guaranteeing the overall Levolor quality and is offered in a large selection of popular colors. The SheerView perforation option provides a unique see-through feature, reducing solar heat gain up to 42% as compared to a fully opened blind while optimizing the exterior view and maximizing light/glare control.

Product Specifications

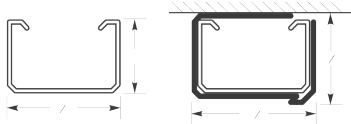
For more detailed specifications please reference Riviera Skylight 1 Inch Blind product Guide Specifications.

Products

- A. Riviera Skylight 1 Inch Blind manufactured by LEVOLOR
- B. Lifetime Limited Warranty
- C. Materials:



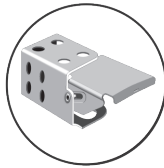
- Headrail** shall be of .025 inch thick painted steel, "U" shaped, 1 inch high x 1 9/16 inches wide. All hardware shall be enclosed in the steel headrail.
- Guardian Tilter** shall be of a .042 inch thick Tomized steel housing with a self-lubricating nylon, automatically disengaging worm and gear mechanism to eliminate overdrive.
- Installation Brackets** shall be of at least .048 inch thick painted steel with a rivet-hinged safety locking front cover to permit removal of headrail without lateral movement.
- Ladders** (slat supports): Distance between slats shall not exceed 21.5mm.



- Slats** shall be of 5000 series magnesium aluminum alloy only. Slats shall be nominally 1 inch wide and the thickness of the slats shall be nominally .008 inches. Slats shall be (select one):
 - a. Unperforated.
 - b. SheerView—Slats shall be perforated with a staggered pattern of .020 inch diameter holes, nominally 177 per inch of slat length. Slats shall have an openness factor of 6%.
- Operation** Blind shall have full tilt capability and lift to bottom of headrail.



SheerView



Open End Bracket



Hidden Guide/Wire Detail



Ring Tilter

- Options** shall include:
 - a. Restrictive Cam Tilter
 - b. Special Installation Brackets

LEVOLOR